

DGT™/DGHT™

Fire Wall Hangers

Ideal for multi-family, multi-level Type III residential construction, the new patent-pending DGT and DGHT hangers are load-tested firewall hangers with a two-hour fire rating. They're the first fire wall hangers designed to install with a power nailer during framing, which helps save time before hanging drywall and keeps construction projects on schedule.

These two top-flange hangers connect floor trusses and joists to wood stud walls. Both models are offered in a wide range of sizes, making them simple to select and use. Both the DGT and DGHT hangers feature space for two layers of $\frac{5}{8}$ " gypsum board (drywall) to be slipped into place after the framing is complete.

These fire wall hangers have been tested according to ASTM E814 and received a two-hour fire rating for use on one or both sides of the wall. This rating verifies that the DGT and DGHT hangers do not reduce the two-hour fire wall assembly rating.

Features:

- Tested loads for 1½" and 2½" power-driven or hand-installed nails.
- Optimized, cost-effective design for the market.
- Tested and code-listed for for 2x4 walls.
- Innovative top-flange design for back-to-back installation on 2x6 (min.) walls.
- Two-hour Fire-Resistant rating Intertek Design No. SST/WPCF 120-01.



Material: DGT — 12 gauge; DGHT — 10 gauge

Finish: Galvanized

Installation:

- Use all specified fasteners. I-joists require web stiffeners.
- DGT/DGHT hangers are mounted like a standard top-flange hanger.
- Stud wall-plate splices must occur at a stud location.
- DGT welded to steel header with (4) $\frac{1}{8}$ " x 1½" fillet welds and (6) joist nails achieves a download of 1,700 lb. Face flanges require full backing.
- DGHT welded to steel header with (4) $\frac{3}{16}$ " x 1½" fillet welds and (6) joist nails achieves a download of 2,700 lb. Face flanges require full backing.

Options:

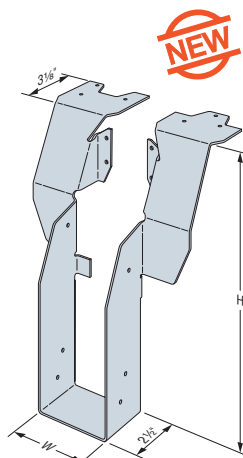
- All DGHT models may be ordered with a skew angle of up to 45° or with one flange concealed left or right. To order, add an "X" to the model number.
- For the skew option, specify skew direction and angle (e.g., for a 3½" x 18" joist skewed 45° to the right, order as DGHT3.62 /18X SKR45).
- For the concealed-flange option, simply specify left or right (e.g., DGHT3.62 /18X right flange concealed). Concealed option available for widths from 3½"–7½".

Codes: See p. 13 for Code Reference Key Chart

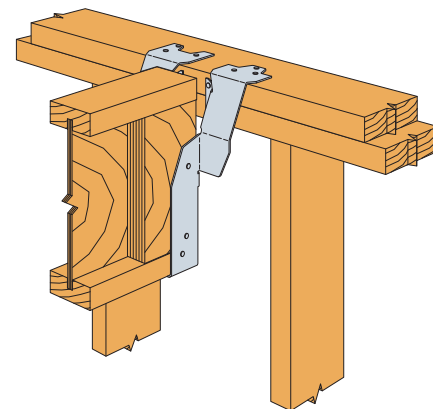
Web Applications: Visit app.strongtie.com/hs to access our Hanger Selector web application.

**Two-Hour, Fire-Rated Wall**

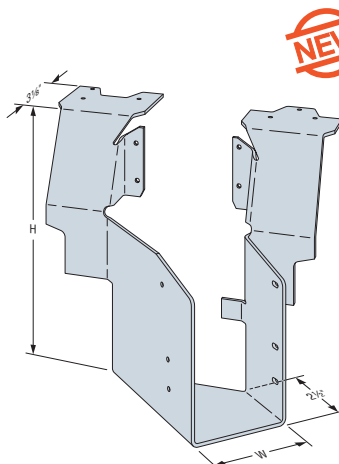
Simpson Strong-Tie has completed ASTM E814 standard testing at an accredited laboratory. The use of the DGT/DGHT hangers does not reduce the two-hour, fire wall assembly rating.



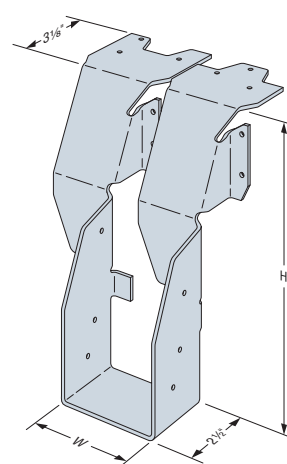
DGT
(DGHT similar)



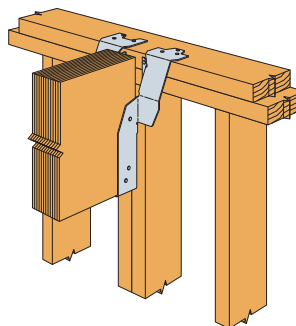
DGT Hanger Installed on Stud Wall with I-Joist
(DGHT similar)



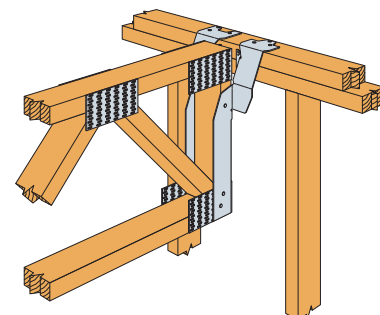
DGHT Skewed Right Shown
(square-cut or bevel-cut joist allowed)



DGHT Installation with Right Flange Concealed
(left similar)



DGHT Hanger Installed over Double Studs



DGHT Hanger Installed on Stud Wall with Truss
(DGT similar)

DGT™/DGHT™

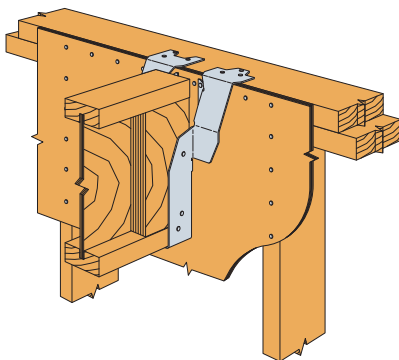
Fire Wall Hangers (cont.)

Allowable Loads on Stud Wall

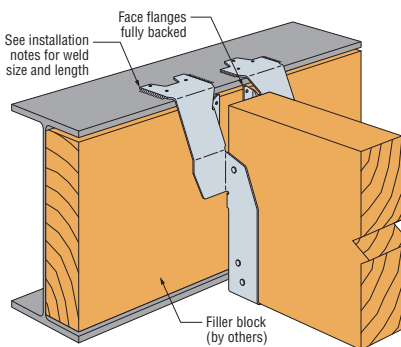
Model	Ga.	Joist Depth (in.)	Fasteners (in.)			DF/SP				SPF/HF			Code Ref.	
			Top	Face	Joist	Uplift (160)	Download (100/125)			Uplift (160)	Download (100/125)			
							Stud Wall	2x, 3x Nailer	(2) 2x, 4x Nailer		Stud Wall	2x, 3x Nailer		(2) 2x, 4x Nailer
DGT	12	7¼ to 11¼	(6) 0.148 x 1½	(2) 0.148 x 1½	(6) 0.148 x 1½	500	1,650	1,650	1,650	450	1,265	1,265	1,265	IBC®, FL, LA
			(6) 0.148 x 2½	(4) 0.148 x 2½	(6) 0.148 x 1½	640	1,860	—	1,860	555	1,430	—	1,430	
DGT	12	11⅞ to 24	(6) 0.148 x 1½	(2) 0.148 x 1½	(6) 0.148 x 1½	500	1,620	1,620	1,620	450	1,380	1,380	1,380	
			(6) 0.148 x 2½	(4) 0.148 x 2½	(6) 0.148 x 1½	640	1,725	—	1,725	555	1,390	—	1,390	
DGHT	10	9½ to 24	(6) 0.148 x 1½	(2) 0.148 x 1½	(6) 0.148 x 1½	660	1,995	1,995	1,995	570	1,535	1,535	1,535	
			(6) 0.148 x 2½	(4) 0.148 x 2½	(6) 0.148 x 1½	830	2,350	—	2,350	725	1,805	—	1,805	
DGHT (over studs) ⁴	10	9½ to 24	(6) 0.148 x 2½	(4) 0.148 x 2½	(6) 0.148 x 1½	830	2,485	—	—	725	1,920	—	—	
DGHT (over studs with SDWC) ⁴			(6) 0.148 x 2½	(4) 0.148 x 2½	(6) 0.148 x 1½	830	2,740	—	—	725	2,065	—	—	

- Uplift loads have been increased for earthquake or wind loading with no further increase allowed. Reduce where other loads govern.
- Allowable loads are for 2x4 minimum stud wall or nailer. Back-to-back installations require a minimum 2x6. Wall design by designer.
- Hangers spaced closer than 16" o.c. shall reduce allowable load proportionately (e.g. for hangers spaced at 12" o.c., adjust tabulated loads by 12/16 = 0.75).
- Where "(over studs)" is listed, DGHT installation requires a minimum (2) 2x4 stud or post in the wall at hanger location. Post design by designer. Where "(over studs with SDWC)" is listed, install SDWC15600 per the figure on p. 247.
- DGHT hangers may be skewed up to 45°. Skew and concealed flange options cannot be combined. For skewed DGHT, apply 0.78 factor on hanger widths of 1 1/8"-3 3/8" and 0.57 factor on widths of 3 1/8"-7 1/4" for uplift and download. Square cut or bevel cut joist allowed. For DGHT one face flange concealed, use 0.74 of the table loads for uplift and download.
- Web stiffeners required for I-joists.
- DGT and DGHT may be installed over 5/8" maximum wood structural sheathing. For DGT, use 0.72 of the table loads for uplift and download. For DGHT, use 0.75 of table loads for uplift and download. Sheathing shall be installed flush with top of wall and fastened per code.
- Fasteners:** Nail dimensions are listed diameter by length. SDWC15600 = 0.152" shank diameter x 6" long Strong-Drive® SDWC Truss Screw. See pp. 23-24 for fastener information.

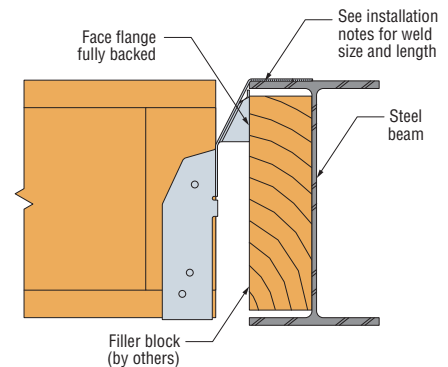
Fire Wall Hangers



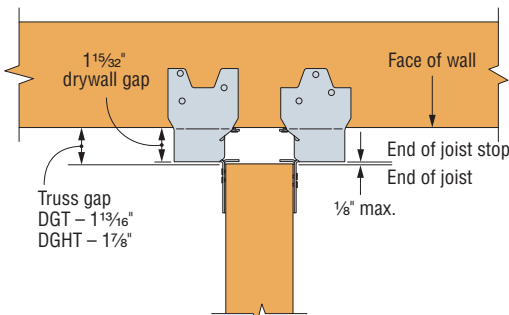
DGT Hanger Installation on Stud Wall with I-Joist
(DGHT similar)



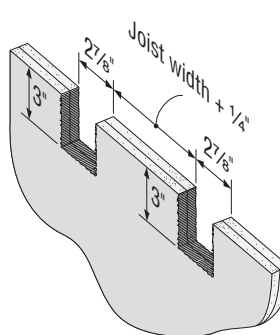
DGHT Welded Installation on Steel Beam



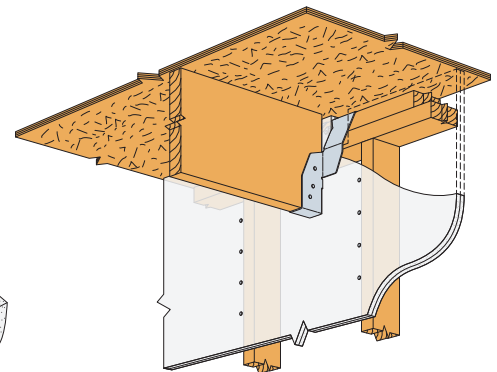
DGHT Welded Installation (side view)



DGHT Hanger Installation (top view with gap; DGT similar)



Drywall Notches



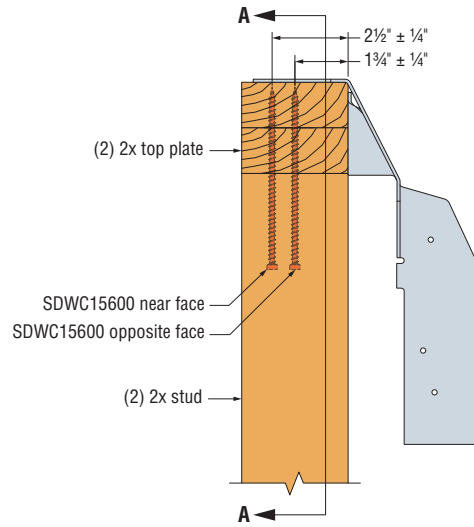
DGT Hanger Installation (DGHT similar)

DGT™/DGHT™

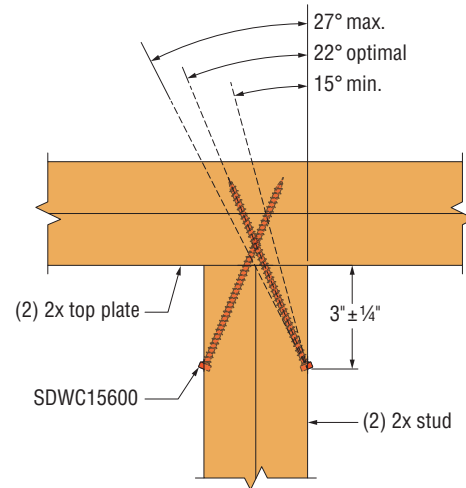
Fire Wall Hangers (cont.)

DGT/DGHT Models

Joist Size (in.)	DGT (12 Ga.) Model No.	DGHT (10 Ga.) Model No.	W (in.)	H (in.)
2x8	DGT28	—	1 9/16	7 1/8
2x10	DGT210	—	1 9/16	9 1/8
2x12	DGT212	—	1 9/16	11 1/8
1 3/4 x 9 1/2	DGT1.81/9.5	DGHT1.81/9.5	1 13/16	9 7/16
1 3/4 x 11 7/8	DGT1.81/11.88	DGHT1.81/11.88	1 13/16	11 13/16
1 3/4 x 14	DGT1.81/14	DGHT1.81/14	1 13/16	13 15/16
1 3/4 x 16	DGT1.81/16	DGHT1.81/16	1 13/16	15 15/16
2 x 9 1/2	DGT2.1/9.5	DGHT2.1/9.5	2 1/8	9 7/16
2 x 11 7/8	DGT2.1/11.88	DGHT2.1/11.88	2 1/8	11 13/16
2 x 14	DGT2.1/14	DGHT2.1/14	2 1/8	13 13/16
2 x 16	DGT2.1/16	DGHT2.1/16	2 1/8	15 13/16
2 1/16 x 9 1/2	DGT2.1/9.5	DGHT2.1/9.5	2 1/8	9 7/16
2 1/16 x 11 7/8	DGT2.1/11.88	DGHT2.1/11.88	2 1/8	11 13/16
2 1/16 x 14	DGT2.1/14	DGHT2.1/14	2 1/8	13 13/16
2 1/16 x 16	DGT2.1/16	DGHT2.1/16	2 1/8	15 13/16
2 5/16 x 9 1/2	DGT2.37/9.5	DGHT2.37/9.5	2 3/8	9 7/16
2 5/16 x 11 7/8	DGT2.37/11.88	DGHT2.37/11.88	2 3/8	11 13/16
2 5/16 x 14	DGT2.37/14	DGHT2.37/14	2 3/8	13 15/16
2 5/16 x 16	DGT2.37/16	DGHT2.37/16	2 3/8	15 15/16
2 5/16 x 18	DGT2.37/18	DGHT2.37/18	2 3/8	17 13/16
2 5/16 x 20	DGT2.37/20	DGHT2.37/20	2 3/8	19 13/16
2 1/2 x 9 1/2	DGT2.56/9.5	DGHT2.56/9.5	2 9/16	9 7/16
2 1/2 x 11 7/8	DGT2.56/11.88	DGHT2.56/11.88	2 9/16	11 13/16
2 1/2 x 14	DGT2.56/14	DGHT2.56/14	2 9/16	13 15/16
2 1/2 x 16	DGT2.56/16	DGHT2.56/16	2 9/16	15 15/16
2 1/2 x 18	DGT2.56/18	DGHT2.56/18	2 9/16	17 13/16
2 1/2 x 20	DGT2.56/20	DGHT2.56/20	2 9/16	19 13/16
2 1/2 x 22	DGT2.56/22	DGHT2.56/22	2 9/16	21 15/16
2 1/2 x 24	DGT2.56/24	DGHT2.56/24	2 9/16	23 15/16
3 1/2 x 9 1/4	DGT3.62/9.25	DGHT3.62/9.25	3 5/8	9 3/16
3 1/2 x 9 1/2	DGT3.62/9.5	DGHT3.62/9.5	3 5/8	9 7/16
3 1/2 x 11 1/4	DGT3.62/11.25	DGHT3.62/11.25	3 5/8	11 3/16
3 1/2 x 11 7/8	DGT3.62/11.88	DGHT3.62/11.88	3 5/8	11 13/16
3 1/2 x 14	DGT3.62/14	DGHT3.62/14	3 5/8	13 15/16
3 1/2 x 16	DGT3.62/16	DGHT3.62/16	3 5/8	15 15/16
3 1/2 x 18	DGT3.62/18	DGHT3.62/18	3 5/8	17 13/16
3 1/2 x 20	DGT3.62/20	DGHT3.62/20	3 5/8	19 13/16
3 1/2 x 22	DGT3.62/22	DGHT3.62/22	3 5/8	21 15/16
3 1/2 x 24	DGT3.62/24	DGHT3.62/24	3 5/8	23 15/16
5 1/4 x 11 7/8	—	DGHT5.37/11.88	5 3/8	11 13/16
5 1/4 x 14	—	DGHT5.37/14	5 3/8	13 13/16
5 1/4 x 16	—	DGHT5.37/16	5 3/8	15 15/16
5 1/4 x 18	—	DGHT5.37/18	5 3/8	17 13/16
5 1/4 x 20	—	DGHT5.37/20	5 3/8	19 13/16
5 1/4 x 22	—	DGHT5.37/22	5 3/8	21 15/16
5 1/4 x 24	—	DGHT5.37/24	5 3/8	23 13/16
5 1/8 glulam	—	DGHT5.25	5 1/4	SPEC
5 1/2 glulam and 6x H = XX-XX	—	DGHT5.56	5 9/16	SPEC
6 3/4 glulam	—	DGHT6.88	6 7/8	SPEC
7 x 11 7/8	—	DGHT7.12/11.88	7 1/8	11 13/16
7 x 14	—	DGHT7.12/14	7 1/8	13 13/16
7 x 16	—	DGHT7.12/16	7 1/8	15 15/16
7 x 18	—	DGHT7.12/18	7 1/8	17 13/16
7 x 20	—	DGHT7.12/20	7 1/8	19 13/16
7 x 22	—	DGHT7.12/22	7 1/8	21 15/16
7 x 24	—	DGHT7.12/24	7 1/8	23 13/16

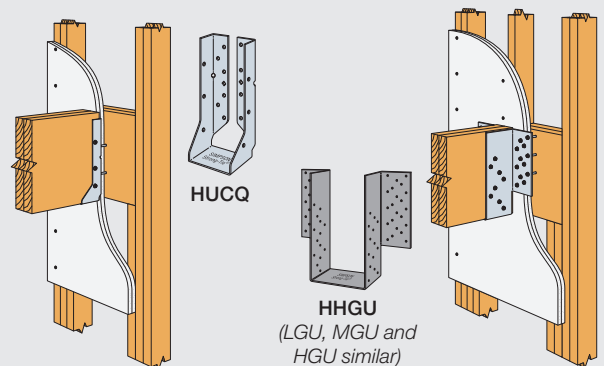


DGHT (over studs with SDWC™)



Section A-A Installation Angle Range
(DGHT not shown for clarity)

Additional Fire Rated Hangers for Mid-Wall Installations and Heavier Loads



HUCQ Installed Over Two Layers of 5/8" Drywall

MGU Installed Over Two Layers of 5/8" Drywall

For installation and allowable load information, see engineering letter L-C-FACEMNTFW at strongtie.com.