

# VTCR

## Single-Sided Valley Truss Clip



This product is preferable to similar connectors because of (a) easier installation, (b) higher loads, (c) lower installed cost, or a combination of these features.

The VTCR is a single-sided valley truss clip that provides a positive connection between the valley truss and the supporting framing below. Installed on top of the roof sheathing, it eliminates the need to add a support wedge under the valley truss or to bevel the bottom chord to match the roof pitch.

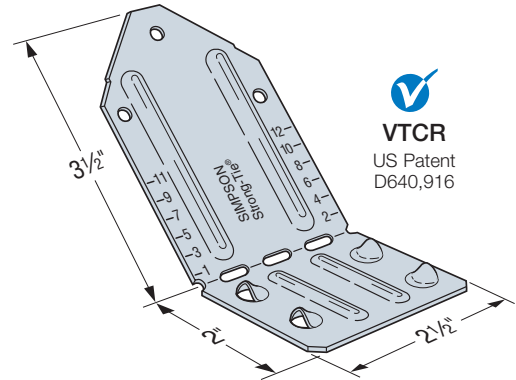
- Single-sided for new construction or retrofit applications — can be installed after the valley truss is set in place
- Accommodates pitches from 0/12 to 12/12
- Can be installed on either beveled or non-beveled bottom chords
- Installs with nails or Strong-Drive® SD Connector screws

**Material:** 18 gauge    **Finish:** Galvanized

**Installation:**

- The dome holes assist in installing the fasteners into the supporting framing at approximately 45°

**Codes:** See p. 13 for Code Reference Key Chart



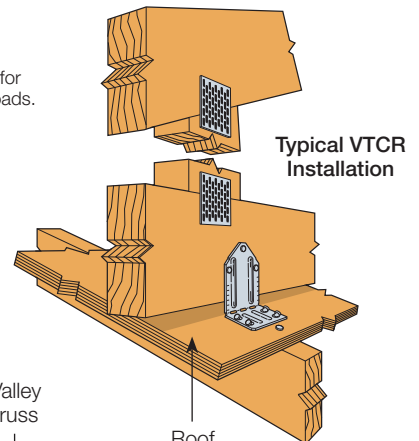
  
**VTCR**  
US Patent  
D640,916

Plated Truss Connectors

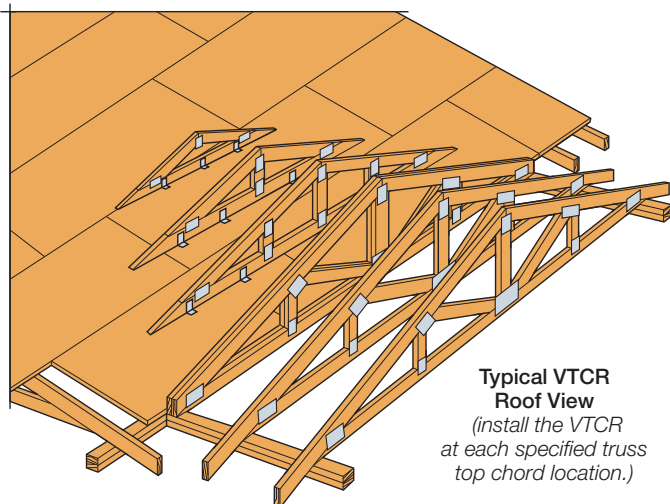
**SD** Many of these products are approved for installation with Strong-Drive SD Connector screws. See pp. 362–366 for more information.

Model No.	Fasteners (in.)		Supporting Roof Pitch	DF/SP Allowable Loads		SPF/HF Allowable Loads		Code Ref.
	Supporting Framing	Valley Truss		Uplift <sup>3</sup> (160)	Download <sup>5</sup> (100/115/125/160)	Uplift <sup>3</sup> (160)	Download <sup>6</sup> (100/115/125/160)	
VTCR	(4) 0.148 x 3	(3) 0.148 x 1 1/2	up to 12/12	370	790	320	655	IBC®, FL
	(4) #9 x 2 1/2" SD	(3) #9 x 1 1/2" SD	< 4/12	390	790	335	655	
			4/12 to 12/12	495	790	425	655	

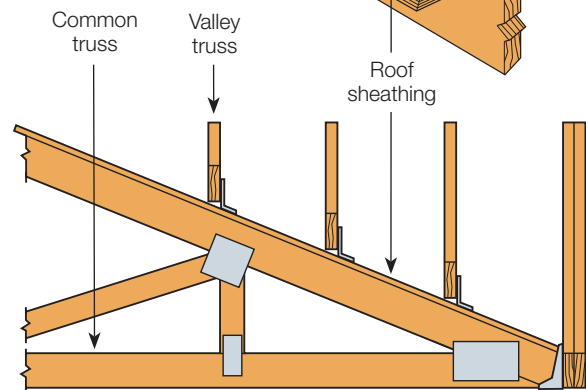
1. Uplift loads have been increased for earthquake or wind loading with no further increase allowed. Reduce where other loads govern.
2. Loads are based on installation over 7/16" or 15/32" sheathing. For installation over 19/32" or 5/8" sheathing, allowable uplift loads are 285 lb. (DF/SP) and 245 lb. (SPF/HF) when installed with nails, or 370 lb. (DF/SP) and 320 lb. (SPF/HF) when installed with screws.
3. When attached directly to the supporting framing (**without sheathing**) with either screws or nails, the allowable uplift for pitches less than 4/12 is 240 lb. (DF/SP) and 205 lb. (SPF/HF). For pitches 4/12 to 12/12, use the tabulated uplift loads.
4. Allowable uplift loads are based on the lower of the test loads at 3/16" deflection or the ultimate load divided by a safety factor of three.
5. Southern pine allowable download is 750 lb.
6. Hem-fir allowable download is 625 lb.
7. When the valley truss and supporting framing are of different species, use the lower tabulated values.
8. **Fasteners:** Nail dimensions are listed diameter by length. SD screws are Simpson Strong-Tie Strong-Drive SD Connector screws. See pp. 23–24 for fastener information.



**Typical VTCR Installation**



**Typical VTCR Roof View**  
(install the VTCR at each specified truss top chord location.)



**Typical VTCR Side View**